



# New Induction Wireless Manufacturing Efficient Process for Energy Intensive Industries

The main objective of NIWE is to develop and demonstrate new processes and equipment for the metallurgical energy intensive industries, (in the Aluminium, Steel and Iron sector) to reduce the energy consumption in the casting and manufacturing processes and to reduce the GHG emissions with the aim of achieving lower carbon footprint products.

NIWE will provide a new furnace that will take the power by an inductive coupling. This will derive a very quick power transmission from the grid to the furnace. This power will be supplied to the heating system, which, depending on the foundry material could consist on resistances or induction heating.

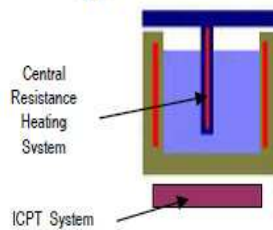
The rapidity of the power transmission system, as well as the wireless operation, will allow the use of smaller and more flexible furnaces.



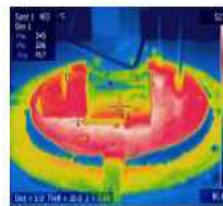
Melting Furnaces



Furnace Demonstrator



Casting Process



Thermography images of preliminary tests with central resistance heating already carried on at TECNALIA foundry plant

## PARTNERS



Visit us on: [www.niweproject.eu](http://www.niweproject.eu)

